



Electrolux

Digital Cabinets 400lt Line Freezer 1 Door - Stainless steel

ITEM # _____

MODEL # _____

NAME # _____

SIS # _____

AIA # _____



Electrolux



Digital Cabinets

400lt Line Freezer 1 Door - Stainless steel

730189 (R04FSF4)

1-door freezer 400lt, -15-24°C,
stainless steel

Short Form Specification

Item No. _____

Exterior in stainless steel. Interior in white High Impact Polystyrene with rounded corners and 45mm thick insulation. Right hinged full door with lock and heated frame, reversible on-site. Built-in refrigeration unit; manual defrost; digital control and temperature display; multiple evaporating grids. For ambient temperatures up to 38 °C. HCFC, CFC and HFC free insulation and R404a refrigerant gas.

Supplied with n. 4 evaporating grids.

Main Features

- Digital control panel allowing the easy and precise setting and control of the internal temperature.
- Shelf runners are thermoformed and are incorporated in the internal structure to be easily cleanable.
- Model requires only 1 phase 220/240V supply and can be plugged straight into an existing power socket.
- Very quiet operation.
- Whole interior cell with rounded corners is white thermoformed polystyrene, which is impact resistant.
- No joints whatsoever to eliminate dirt traps.
- Simple refrigeration system easily accessible from the rear of the units.
- Suitable for use in ambient temperatures of up to 38 ° C.

Construction

- Developed and produced in ISO 9001 and ISO 14001 certified factory.
- All models in range are finished in top quality materials to aid durability.
- CFC and HCFC free (ecological refrigerant type: R404a, - gas in foam: cyclopentane).

Optional Accessories

- 2 wheels for HD refrigerated counter and 400, 600 & 1300lt benefit refrigerated cabinets PNC 880539 ☐
- Pvc container with false bottom for 400lt PNC 881072 ☐
- Printer for HACCP basic version (for cabinets and counters with digital control) PNC 881457 ☐

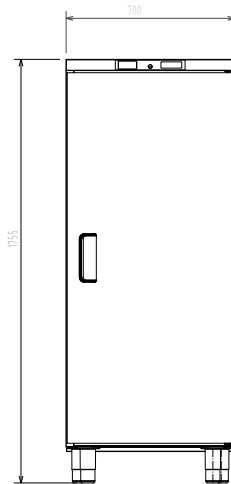
APPROVAL: _____



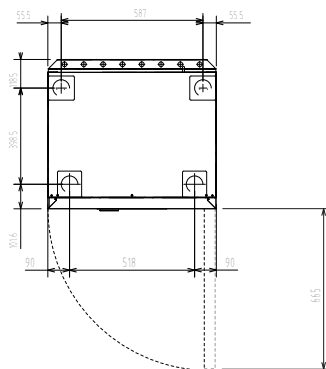
Electrolux

Digital Cabinets 400lt Line Freezer 1 Door - Stainless steel

Front

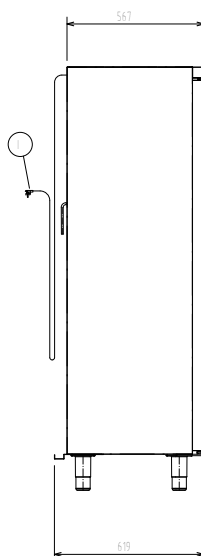


Top



EI = Electrical connection

Side



Electric

Supply voltage:

730189(R04FSF4)

230 V/1N ph/50 Hz

Connected load:

0.53 kW

Key Information:

Door hinges: Right Side

External dimensions, Height: 1755 mm

External dimensions, Width: 703 mm

External dimensions, Depth with
Doors Open: 1310 mm

Gross capacity: 400 lt

Noise level: 56 dBA

Number and type of grids
(included): - 600x400

Type of external material: Stainless Steel

External door material: Stainless Steel

Refrigeration Data

Control type: Digital

Compressor power: 1/2 hp

Refrigerant type: R404a

Refrigeration power: 780 W

Refrigeration power at
evaporation temperature: -29 °C

Refrigerant weight: 240 g

Operating temperature min.: -24 °C

Operating temperature max.: -15 °C

Operating mode: Static

Cooling unit: Built-In

Defrost type: Manual



Digital Cabinets
400lt Line Freezer 1 Door - Stainless steel

The company reserves the right to make modifications to the products without prior notice. All information correct at time of printing.

2012.09.28