

# 700XP

## 2/4/6 Burner Gas Boiling Tops

The 700XP range is comprised of over 100 models designed to guarantee the highest level of performance, reliability, energy saving, safety standards and ergonomic operation. These concepts are reflected throughout the line in its modularity, construction and numerous configurations: countertop (on base or table), free-standing, on concrete or stainless steel plinth, bridged or cantilever. Thanks to its advance technology and premium performance, 700XP is a perfect solution for institutions of small sizes with limited footprint as well as restaurants needing to obtain the most from the kitchen space. The models detailed in this sheet are 2, 4 and 6 burners gas boiling top range.



371000

### EASY TO INSTALL

- Main connections can be accessed via the rear of the unit.
- Access to all components from the front
- Provided with a service duct to facilitate installation and can be mounted on table tops, open base cupboards bridging or cantilever supports.

### EASY TO CLEAN

- One piece pressed worktop in 1,5mm stainless steel with smooth, rounded corners.
- Exterior panels in stainless steel with Scotch Brite finish.
- All models have right-angled, laser cut side edges to allow the flush-fitting of units side-by-side thus eliminating gaps and possible dirt traps.

- Pan supports are in cast iron.
- Optional accessory rounded stainless steel pan supports available (washable in a dishwasher).

### EASY TO USE

- The gas burner top is ideal for kitchens needing a flexible, powerful and efficient cooking top.
- High efficiency flower flame burners allow for the flame to be precisely regulated and provide the proper amount of heat to pots and pans of different sizes (from a minimum of 10cm in diameter to a maximum of 40cm diameter).
- Each burner has:
  - 5,5 kW (with continuous flame regulation from 1,1kW to 5,5kW)
  - Flame failure device to protect against accidental extinguishing of

the flame.

- Protected pilot light.
- All gas appliances are supplied for use with natural gas, LPG or town gas. Conversion jets supplied as standard.

### EASY TO MAINTAIN

- IPX4 water protection.
- The special design of the control knobs and bezels guarantees against water infiltration.

### EASY ON THE ENVIRONMENT

- 98% recyclable by weight.
- CFC free packaging.



# Electrolux

**700XP**  
**2/4/6 Burner Gas Boiling Tops**

	<b>E7GCGD2C00 371000</b>	<b>E7GCGH4C00 371001</b>	<b>E7GCGL6C00 371004</b>
<b>TECHNICAL DATA</b>			
Power supply	Gas	Gas	Gas
External dimensions - mm			
width	400	800	1200
depth	730	730	730
height	250	250	250
Back burner dimensions - mm	Ø 60	Ø 60, Ø 60	Ø 60, Ø 60, Ø 60
Back burners power - kW	5.5	5.5, 5.5	5.5, 5.5, 5.5
Front burners dimension - mm	Ø 60	Ø 60, Ø 60	Ø 60, Ø 60, Ø 60
Front burners power - kW	5.5	5.5, 5.5	5.5, 5.5, 5.5
Power - kW			
gas	11	22	33
Net weight - kg.	20	38	55
<b>ACCESSORIES</b>			
2 SIDE COVERING PANELS H=250-D=700-ELUX	216277	216277	
CHIMNEY UPSTAND 1200MM			206306
CHIMNEY UPSTAND 400MM	206303		
CHIMNEY UPSTAND 800MM		206304	
DOUBLE BURNER RIBBED PLATE - 700 LINE	921685	921685	921685
DOUBLE BURNER SMOOTH PLATE - 700 LINE	921684	921684	921684
DRAUGHT DIVERTER WITH 120 MM DIAMETER	206126		
DRAUGHT DIVERTER WITH 150 MM DIAMETER		206132	
FLUE CONDENSER FOR 1 MODULE DIAM.150MM		206246	
FLUE CONDENSER FOR 1/2 MOD. DIAM.120MM	206310		
FRONTAL HANDRAIL 1200 MM	216049	216049	216049
FRONTAL HANDRAIL 1600 MM	216050	216050	216050
FRONTAL HANDRAIL 400 MM	216046		
FRONTAL HANDRAIL 800 MM	216047	216047	
LARGE HANDRAIL(PORIONING SHELF)400 MM	216185	216185	216185
LARGE HANDRAIL(PORIONING SHELF)800 MM	216186	216186	216186
MATCHING RING FOR FLUE CONDENSER 150DIAM		206133	
MATCHING RING-FLUE CONDENSER 120-130DIAM	206127		
PRESSURE REGULATOR FOR GAS UNITS	927225	927225	927225
S/S GRID FOR DOUBLE BURNER-700 LINE	206297	206297	206297
SIDE HANDRAIL-RIGHT/LEFT HAND-700 LINE	206307	206307	206307
SINGLE BURNER RADIANT PLATE - 700 LINE	206264	206264	206264
SINGLE BURNER RIBBED PLATE - 700 LINE	206261	206261	206261
SINGLE BURNER SMOOTH PLATE - 700 LINE	206260	206260	206260
SUPPORT FOR "BRIDGE" SYSTEM 1000 MM	206138	206138	
SUPPORT FOR "BRIDGE" SYSTEM 1200 MM	206139	206139	206139
SUPPORT FOR "BRIDGE" SYSTEM 1400 MM	206140	206140	206140
SUPPORT FOR "BRIDGE" SYSTEM 1600 MM	206141	206141	206141
SUPPORT FOR "BRIDGE" SYSTEM 400 MM	206154		
SUPPORT FOR "BRIDGE" SYSTEM 800 MM	206137	206137	
WATER COLUMN EXTENSION FOR 700 LINE	206291	206291	206291
WATER COLUMN WITH SWIVEL ARM	206289	206289	206289

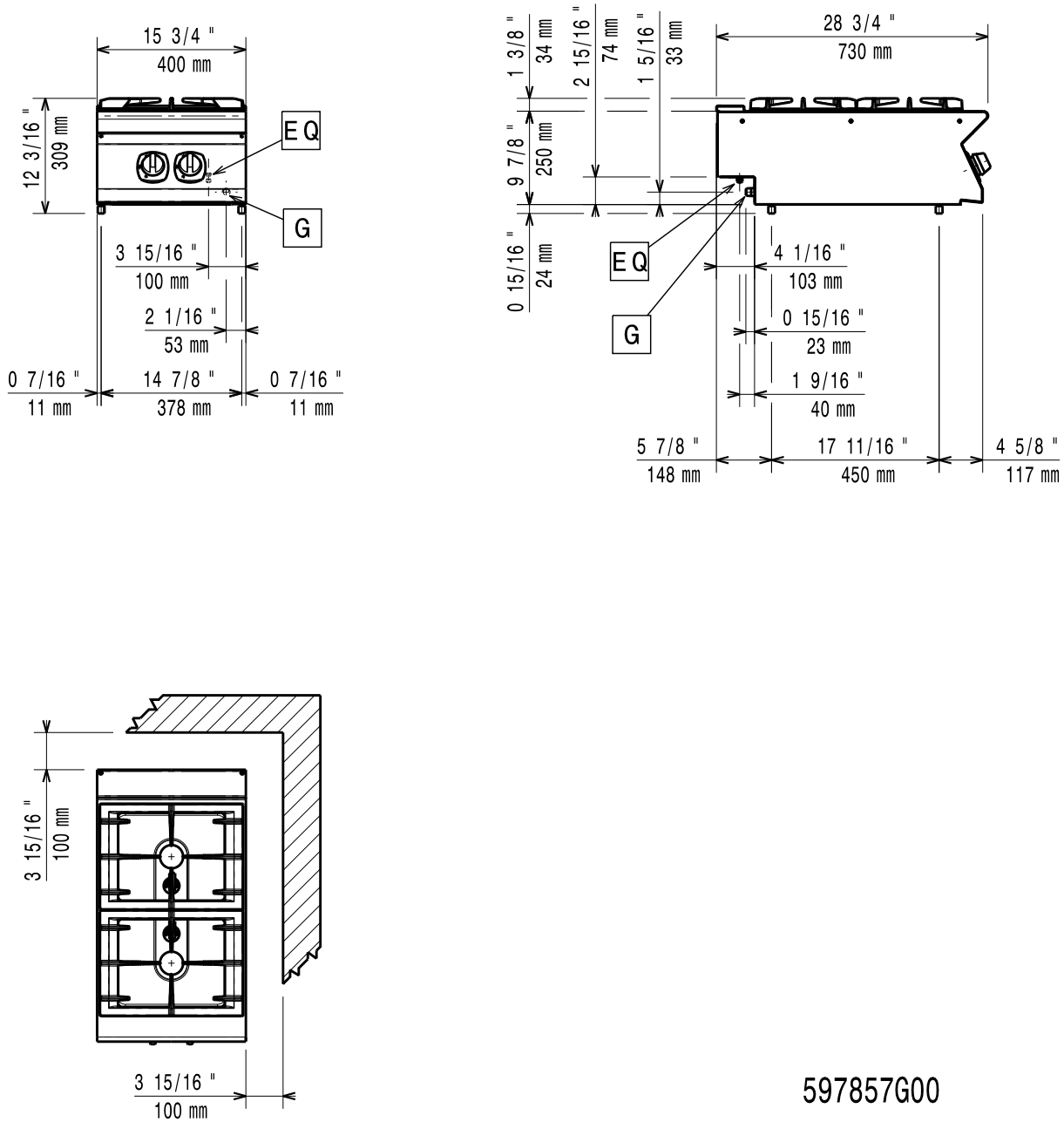
CHAA010

2011-07-07

Subject to change without notice

700XP  
2/4/6 Burner Gas Boiling Tops

371000



<b>LEGEND</b> G - Gas connection	<b>E7GCGD2C00</b> <b>371000</b>
	1/2"

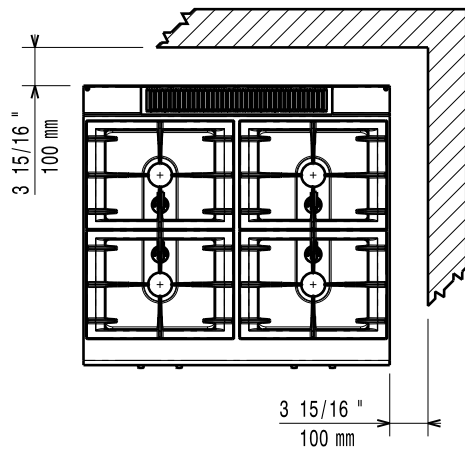
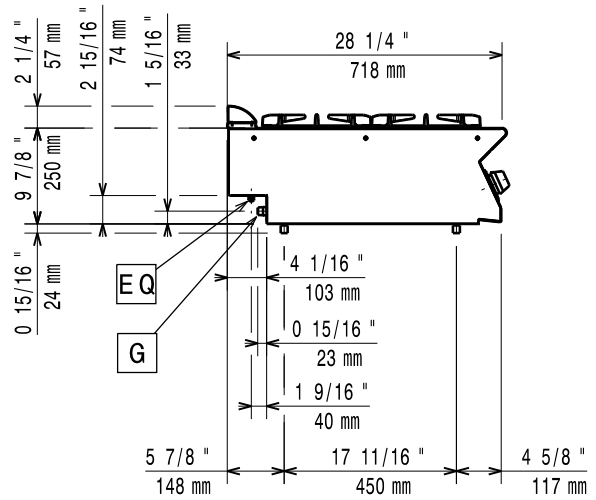
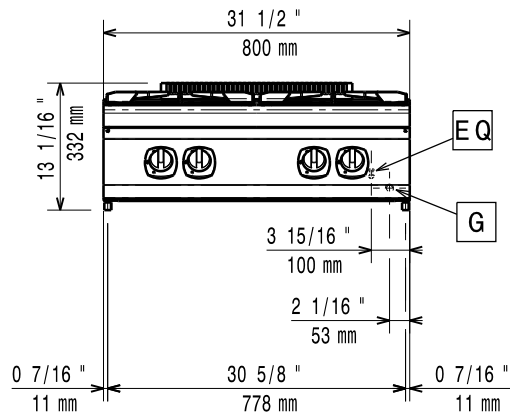
CHAA010

2011-07-07

Subject to change without notice

700XP  
2/4/6 Burner Gas Boiling Tops

371001



597857H00

LEGEND

G - Gas connection

E7GCGH4C00  
371001

1/2"

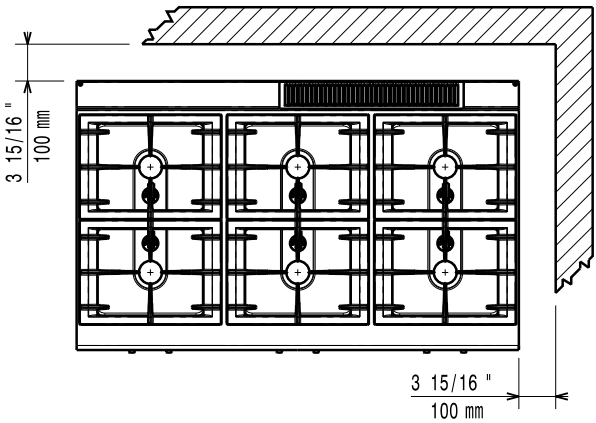
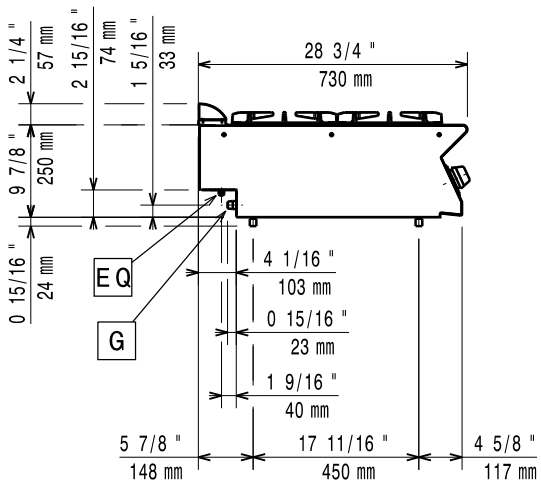
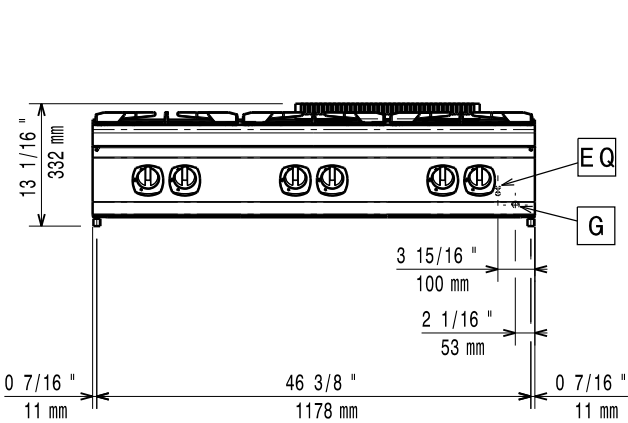
CHAA010

2011-07-07

Subject to change without notice

700XP  
2/4/6 Burner Gas Boiling Tops

371004



597857J00

LEGEND

G - Gas connection

E7GCGL6C00  
371004

1/2"

CHAA010

2011-07-07

Subject to change without notice